



£1,950 Monthly

Hawfinch House, Moorhen Drive, West Hendon, London

Penthouse | 2 Bedrooms | 2 Bathrooms

0207 684 2852



[www.arlingtonrouse.com](http://www.arlingtonrouse.com)



# Step Inside

---

## Key Features

- Two large terraces
- 24 hour concierge
- Thames Link trains available from West Hendon
- Under floor Heating
- Fantastic views Across London
-

## Property Description

A stunning penthouse apartment includes: two double bedrooms and two bathrooms (one en-suite), open plan living room and kitchen with all appliances and two large terraces.

## Main Particulars

A stunning penthouse apartment includes: two double bedrooms and two bathrooms (one en-suite), open plan living room and kitchen with all appliances and two large terraces.

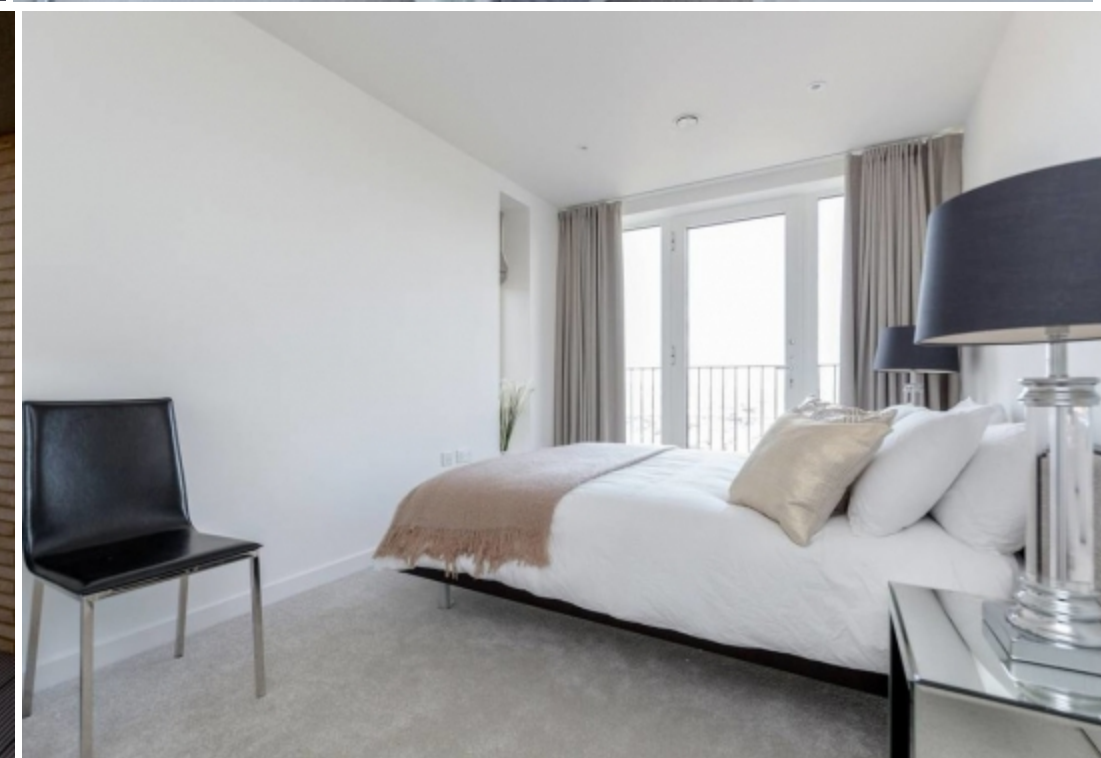
A stunning penthouse apartment includes: two double bedrooms and two bathrooms (one en-suite), open plan living room and kitchen with all appliances and two large terraces.

The property briefly comprises; a large master bedroom with en-suite shower room and dressing area, a further double bedroom, a fully fitted contemporary kitchen open plan with a large reception room, two large terraces with views of the "Welsh Harp" reservoir and North London, underfloor communal heating and individual hot water tank, very low utility bills as the energy performance of the building is very good (EPC rating B), Mechanical ventilation with individual controls in each room, large storage room and utility room.

The property is offered furnished from 16th September.

5 minutes walk from Hendon rail station with direct trains to the city (Kings Cross, Farringdon, City Thameslink, Blackfriars) departing seven days a week. Concierge (7am to 7pm) seven days a week and health suite (completed 2019)





Telephone: 0207 684 2852



---

[www.arlingtonrouse.com](http://www.arlingtonrouse.com)