



£1,450 Per Calendar Month

Nevern Square, Earls Court, London

Apartment | 1 Bedroom | 1 Bathroom



Step Inside

Property Description

A recently refurbished one bedroom apartment located on this desirable garden square.

Main Particulars

A recently refurbished one bedroom apartment located on this desirable garden square.

A split-level one bedroom apartment located on this desirable garden square. The property briefly consists of; a large reception room, a large semi-open plan kitchen, a modern bathroom, a double bedroom with large built in wardrobes and plenty of storage. Located on Nevern Square the property is ideally situated to take advantage of the bars, restaurants, shops and transport links of both the Earls Court Road and the Old Brompton Road. Freshly painted with new carpets. Available from 19th July Furnished.



Arlington Rouse



Arlington Rouse



Arlington Rouse



Arlington Rouse

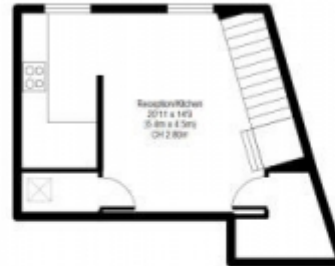
Nevern Square

APPROX GROSS INTERNAL FLOOR AREA 599.33 sq. ft. / 55.70 sq. m

(CH = Ceiling Heights)



Second Floor Flat



*Whilst every attempt has been made to ensure accuracy of the floor plan contained here, all measurements are to be considered approximate and no responsibility is taken for any error or mis-statement. This plan is for illustrative purposes only, and should be treated as such by any prospective purchaser.

This floorplan is for illustrative purposes only and the location of doors, windows and other items are approximate.

Telephone: 0207 684 2852



www.arlingtonrouse.com